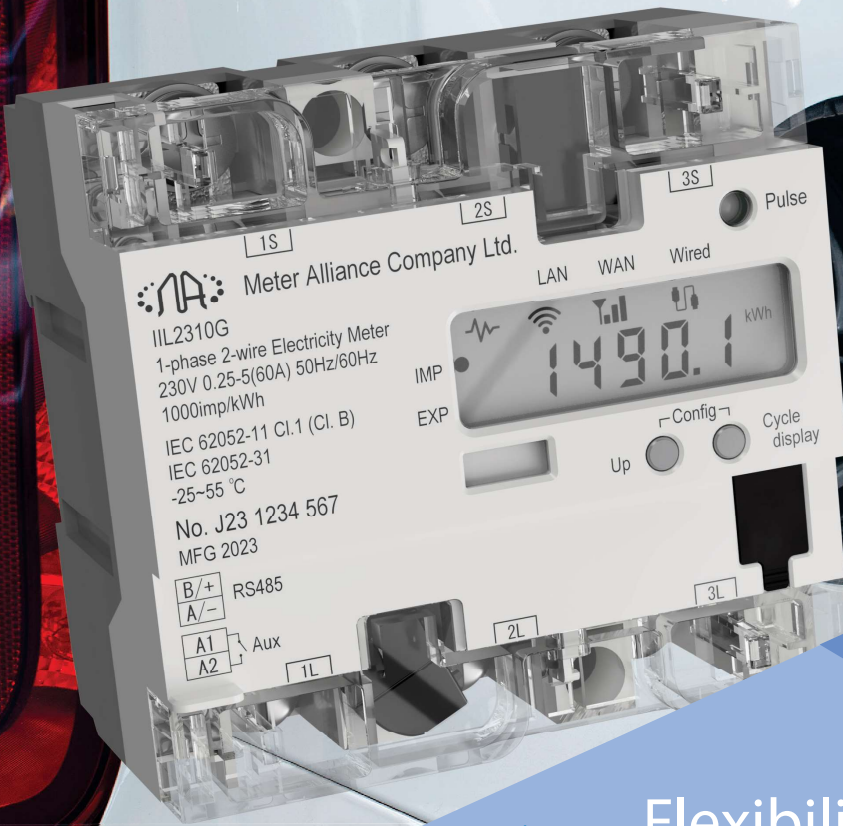




METER ALLIANCE  
COMPANY LIMITED

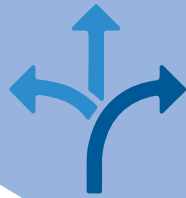


## Connectivity



Offering  
- LTE-M/NB-IoT,  
- ModBus RTU,  
- Wi-Fi,  
- LoRa  
platforms to match  
various customer needs

## Flexibility



Provided by the unique modular and integrated design for PV and EV sub-meter systems. Adjustable functionality in the changing business environment and technology for future upgrades



## Installation Efficiency

One unit integrates solar conditioners, sensors, sub-meters, EV charging posts, and RS485 control equipment communication with IEC rail mounting.

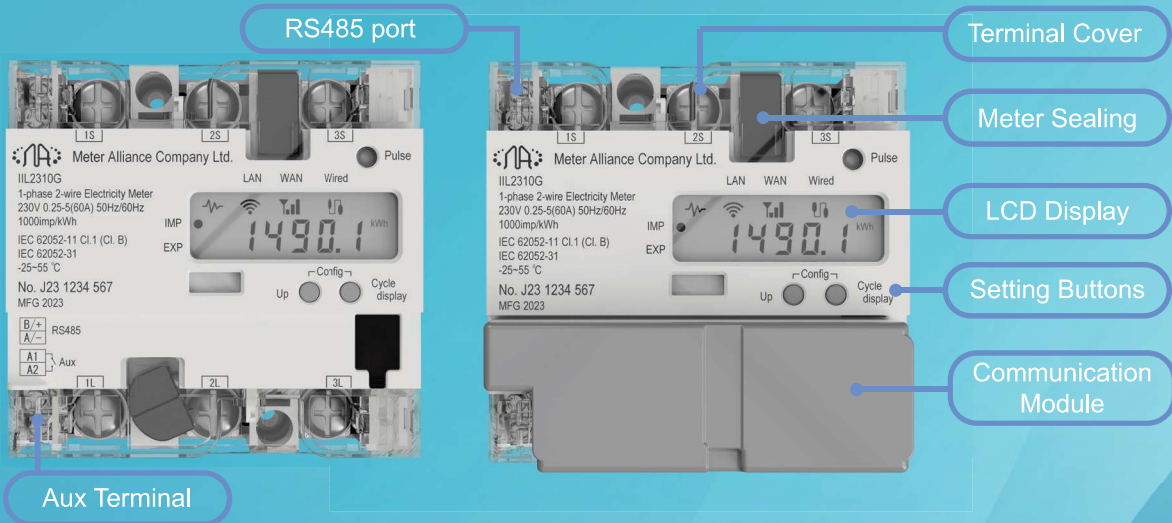


## Security

Guaranteed end-to-end data encryption using TLS v1.2 and AES technology



## IIL2310 Meter Outlook



### Electrical

Voltage	100V / 200V / 230V AC
Phase and Wiring	SP2W / SP3W / 3P3W
Frequency	50 / 60 Hz, variation $\pm 5\%$
Maximum current (Imax)	60A
Accuracy	Class B ( $\pm 1\%$ )
Pulse count	500/3, 250/3, 125/3, or 1,000 pulses/kWh

### Environmental

Operation Temperature	-25°C ~ +55°C (with Gateway operation) -25°C ~ +70°C (Meter only)
Humidity	<95%

### Enclosure

Material	Plastic, type PC (UL-94 V-0)
Dimensions (dxwxh)	66x100x99.6mm
Color	White (JPMA code GN93)
Weight	800g

### Features

Meter measurements	Active energy / Reactive energy / Voltage / Current / Frequency / Bi-direction
Switch Output	External Relay Control (Internal latch relay with 1A current capacity, minimum 100k Ops)
Communication Options	RS485 / MA Communication Gateway
Approval	JEMIC