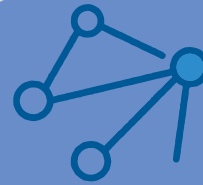




METER ALLIANCE  
COMPANY LIMITED

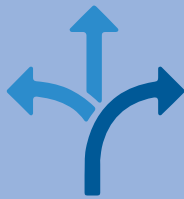


## Connectivity



Offering  
- LTE-M/NB-IoT,  
- ModBus RTU,  
- Wi-Fi,  
- LoRa  
platforms to match  
various customer needs

## Flexibility



Provided by the unique modular and integrated design. Adjustable functionality in the changing business environment and technology for future upgrades

## Installation Efficiency



Integrated design eliminates separate gateways for power conditioners, sensors, and sub-meters.



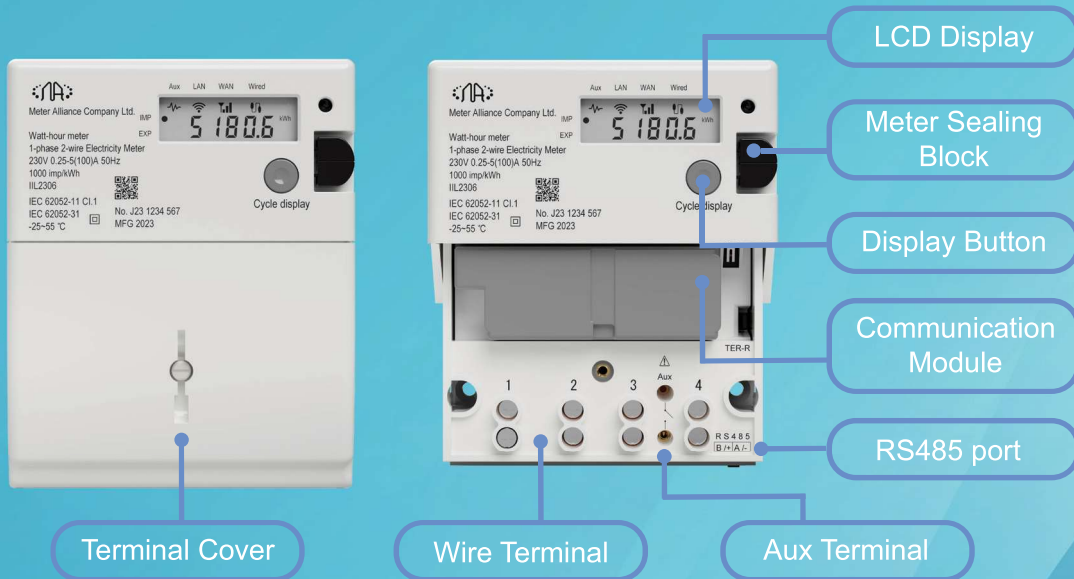
## Security



Guaranteed end-to-end data encryption using TLS v1.2 and AES technology



# IIL2306 Meter Outlook



## Electrical

Voltage	220 – 240V AC, 276V max
Phase and Wiring	SP2W, BS Standard
Frequency	50 / 60 Hz, variation $\pm 5\%$
Maximum current (Imax)	100A
Accuracy	Class B ( $\pm 1\%$ )
Pulse count	500 pulse/kWs

## Environmental

Operation Temperature	-25°C ~ +55°C (with Gateway operation) -25°C ~ +70°C (Meter only)
Humidity	<95%

## Enclosure

Material	Plastic, type PC (UL-94 V-0)
Dimensions (dxwxh)	46x130x146mm
Color	White (JPMA code GN93)
Weight	800g
Water Resistance	IP54 (with extend terminal cover)

## Features

Meter measurements	Active energy / Reactive energy / Voltage / Current / Frequency / Bi-direction
Communication Options	RS485 / MA Communication Gateway
Internal Relay	100A (UC2 approval)