



## OCPP to ModBus Gateway for Energy Management

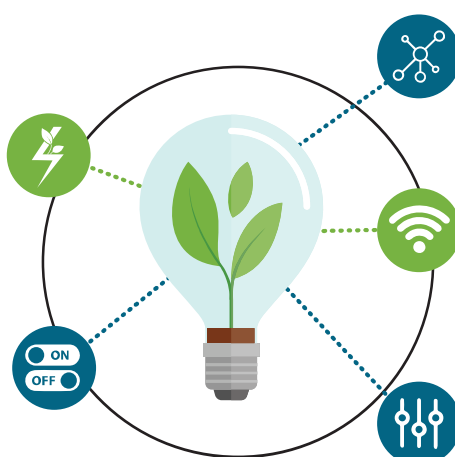
A new intelligent OCPP gateway for remotely managing EV chargers and monitoring solar inverters to maximize green energy benefits for everyone.

### Energy visible

Easily monitor the real-time charging energy of your EV station, solar panel generation, and battery status.

### Remote On/Off control

If you want to customize the charging cycle of the connector to align with your needs or capacity loading, you can easily schedule it with the MA rail meter solution.



### Network capability

The ModBus network can support up to 20 charging connectors for maximum connectivity.

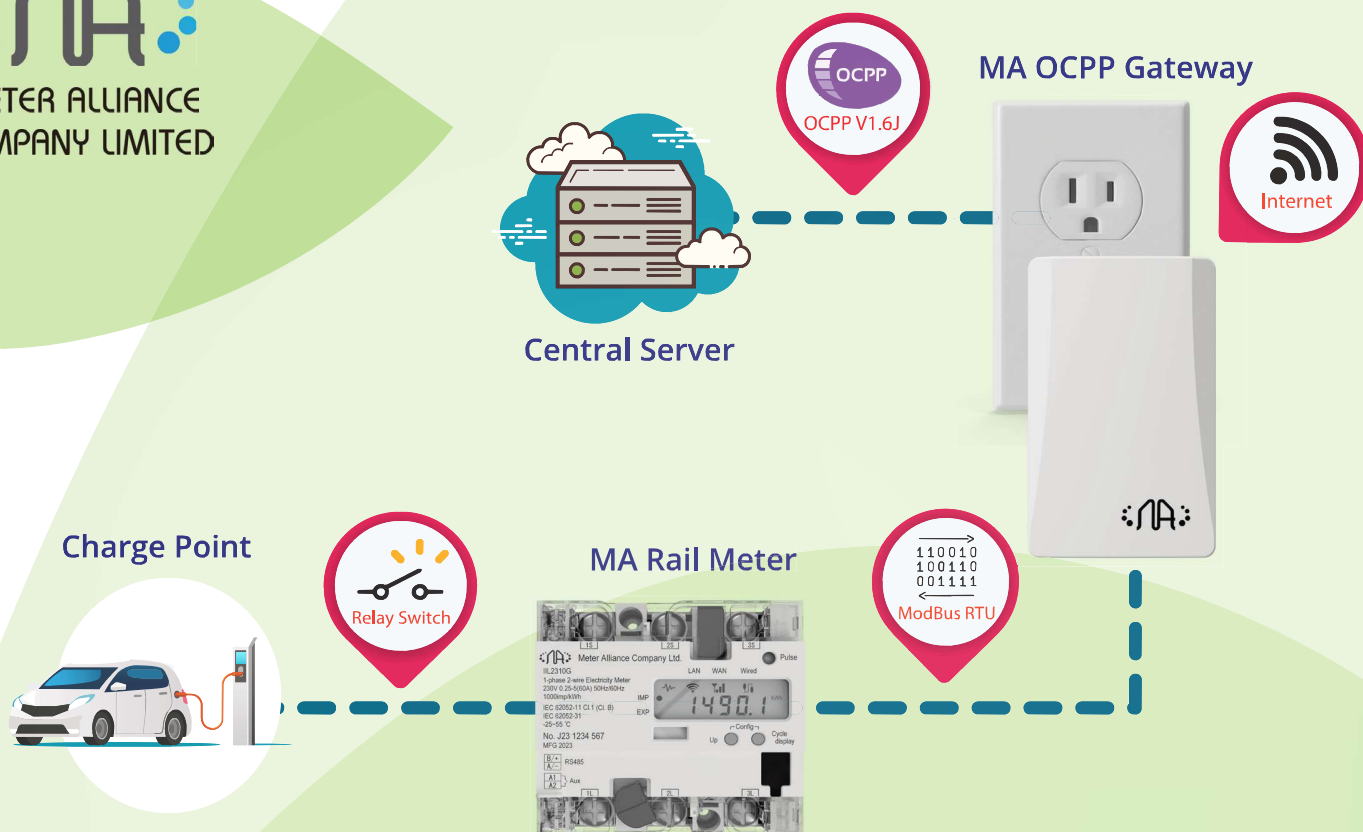
### Multi connection channels

The device is equipped with LTE-M/NB-IoT, Wi-Fi, and Ethernet connections to ensure reliable data transmission and connectivity.

### ModBus Remote Control

The devices with ModBus RTU can be efficiently managed via remote passthrough commands from the management server.





#### Technical Data:

Enclosure	Plastic, type PC (UL-94 V-0) Net dimensions (dxwxh): 40x60x100mm Color: white (JPMA code GN93)
Power	100V / 230V AC
Ethernet	1x Ethernet 10/100 Mbps RJ45 2x Ethernet LED: port link and activity
Wi-Fi	Protocol: 802.11 b/g/n (2.4G)
LTE	LTE FDD: B1/B2/B3/B4/B5/B8/B12/B13/B18/B19/B20/B25/B26/B28 LTE TDD: B39 (For Cat M1 Only)
ModBus RTU	Baud Rate: 2400/4800/9600/19200 on RS485 Port
Weight	140g
Operation Temperature	-25°C ~ +55°C
Humidity	<95%
Approval / Standards	JATE, TELEC, VCCI, J62368-1

