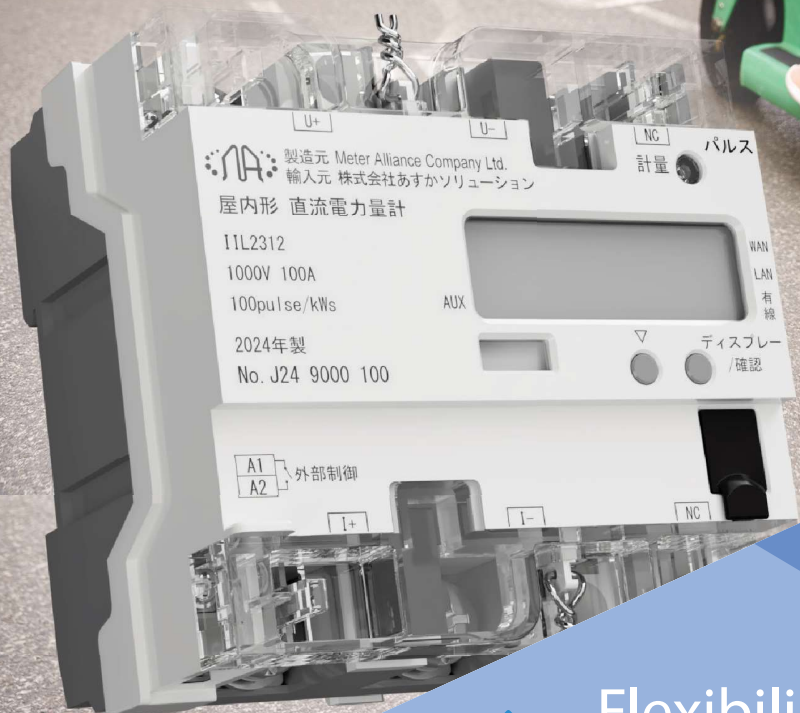




METER ALLIANCE
COMPANY LIMITED



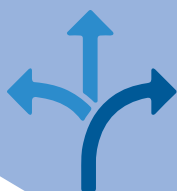
Connectivity



Offering

- LTE-M/NB-IoT,
 - ModBus RTU,
 - Wi-Fi,
 - LoRa
- platforms to match various customer needs

Flexibility

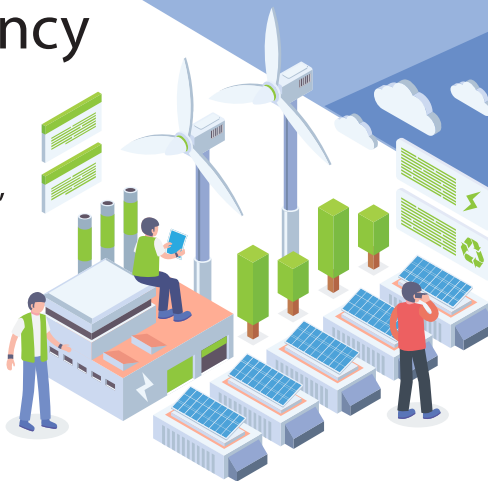


Provided by the unique modular and integrated design for PV and EV sub-meter systems. Adjustable functionality in the changing business environment and technology for future upgrades

Installation Efficiency



One unit integrates solar conditioners, sensors, sub-meters, EV fast charging posts, and RS485 control equipment communication with IEC rail mounting.



Security



Guaranteed end-to-end data encryption using TLS v1.2 and AES technology



METER ALLIANCE COMPANY LIMITED

Smart DC Meter Solution



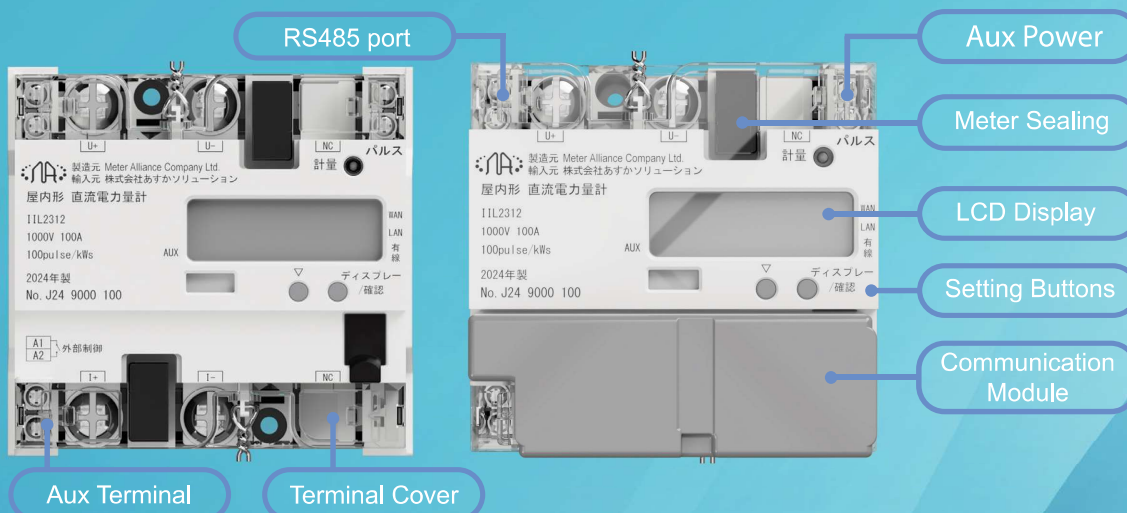
Unit 20, 21/F, Fortune Commercial Building, No 362, Sha Tsui Road, Tsuen Wan, New Territories, Hong Kong.

(852) 5402 0547

sales@meteralliance.com

<https://www.meteralliance.com>

IIL2312 Meter Outlook



Electrical	
Voltage	1000VDC
Maximum current	100A, 200A, 300A, 400A 500A (Direct connection)
Aux Power Supply	DC: 12VDC, 24VDC AC: 85V - 264VAC
Accuracy	+/- 1%
Pulse count	100 pulses/kWh
Environmental	
Operation Temperature	-25°C ~ +55°C (with Gateway operation) -25°C ~ +70°C (Meter only)
Humidity	<95%
Enclosure	
Material	Plastic, type PC (UL-94 V-0)
Dimensions (dxwxh)	60x100x96mm
Color	White (JPMA code GN93)
Weight	370g
Features	
Meter measurements	Voltage / Current / Frequency / Bi-direction
Switch Output	External Relay Control (Internal latch relay with 1A current capacity, minimum 100k Ops)
Communication Options	RS485 / MA Communication Gateway
Lifetime	15 years under special metering approval